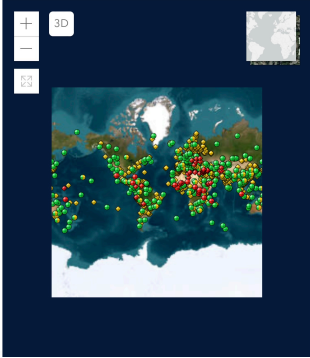


Gillespie Creek Journal

World Heritage List > Interactive Map

World Heritage Interactive Map



It's encouraging to see that WHS's are plentiful around the world. I'm thinking that it would be a wonderful legacy for each of us to select a "Personal Heritage Site" to photograph and write a story about. We'll leave this with our memoirs or perhaps our obituary! How about it?

"World Heritage Sites" caught my eye this past week. Now in the grasp of winter, climate change has come forward to shake up every norm and past expectation.

The Gillespie Creek Journal continues to shout out to followers, "Treasure the beauty that surrounds you at this moment" Next, do what you can to preserve this treasured site be it plant, animal or other wonder of your heritage!

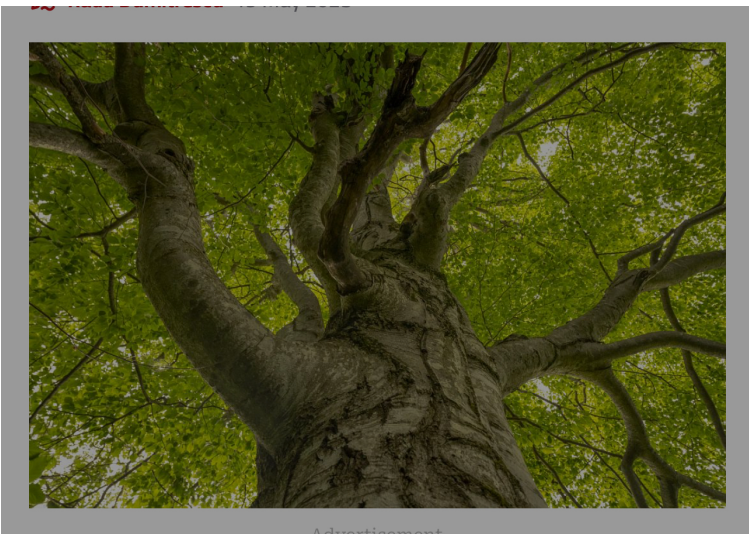
How does a World Heritage Site differ from the 7 Wonders of the World? A World Heritage Site is a landmark or area with legal protections by an international convention administered by the United Nations Educational, Scientific and Cultural Organization (UNESCO). To be designated as such the ecosystem must have cultural, historical, scientific significance. (The 7 Wonders of the World are considered members of the WHS)

The Beech Tree forests of Romania, a World Heritage Site are currently in the news. Now threatened by destruction by developers. Romanian citizens are countering the attack by walking in the forest! Concerned citizens are adopting a single ancient tree and are writing a story about their adoptee!

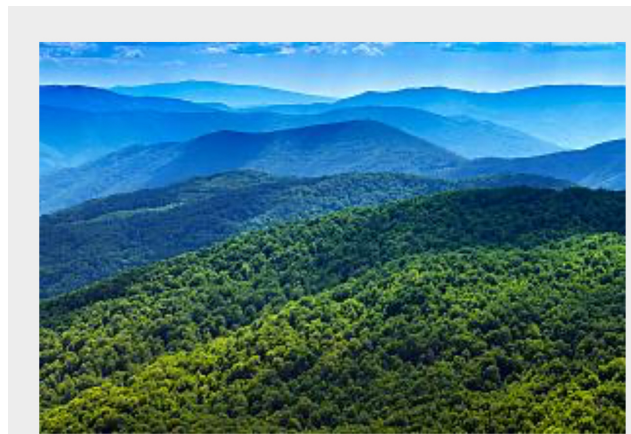


I Have Adopted My Favorite Riparian Wild Flower, The Bottle Gentian

The term "Gentian" entered my vocabulary when at age 5 I was severely burned in a play accident with my grandparents dog. The treatment was hourly swabs with a purple tincture called "Gentian Violet." Later after my retirement I discovered incidental Bottle Gentian plants growing somewhat hidden within a marsh. No, the plant was not used to concoct the medication; however the scar on my face is now nearly invisible I'm privileged to protect and to culture the hope giving Bottle Gentian plants within the Gillespie Creek marshes for my great grandchildren to protect and enjoy.



An Ancient Romanian Beech Tree of Nucsoara
Photo by Romanian Insider



12 May 2023

A View of the Beech Tree Forest of the Carpathian Mountains of Romania
Photos by Daniel Mirlea